

Volume

1

NOVITA D.O.O.

Capacity Auction System

Auction System Client

CAPACITY AUCTION SYSTEM

Auction System Client

© Novita d.o.o.

Pot za Brdom 32

SI-1000 Ljubljana

www.novita.si

info@novita.si

Tel. +386 (0) 1 423 6920 • Fax +386 (0) 1 423 6925

Doc. Ver. CGES/1.0

Table of Contents

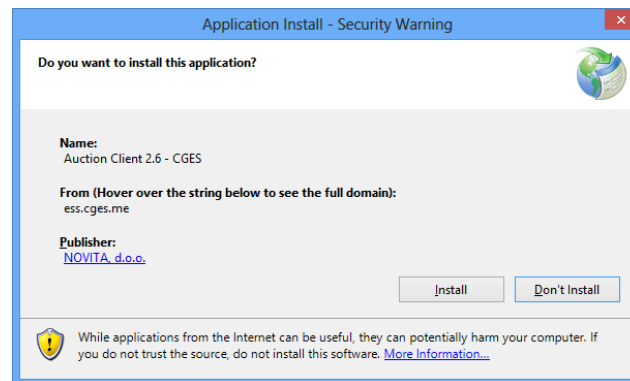
SETUP AND APPLICATION BASICS.....	1
INSTALLING THE PROGRAM.....	1
LOGGING IN	2
APPLICATION WINDOW	3
MARKET SUMMARY, AUCTIONS AND MEMBERS	3
ORDERS AND TRADES.....	4
DAILY ACTIVITIES LOG	5
APPLICATION MENUS AND FUNCTIONS.....	7
FILE.....	7
<i>File Connect.....</i>	<i>7</i>
<i>File Disconnect.....</i>	<i>7</i>
<i>File Connection Test.....</i>	<i>7</i>
<i>File Exit.....</i>	<i>7</i>
TRADING.....	7
<i>Trading Buy.....</i>	<i>7</i>
<i>Trading Multiple Order Entry.....</i>	<i>8</i>
<i>Trading Multiple Order Delete.....</i>	<i>10</i>
<i>Trading Import Bid Document</i>	<i>10</i>
REPORTS.....	10
<i>Reports Orders.....</i>	<i>10</i>
<i>Reports Trades.....</i>	<i>12</i>
<i>Reports System Messages.....</i>	<i>12</i>
<i>Reports Allocation Result Documents.....</i>	<i>13</i>
TOOLS.....	14
<i>Tools Options.....</i>	<i>14</i>
<i>Tools Connection Statistics</i>	<i>15</i>
HELP.....	15
<i>Help About.....</i>	<i>15</i>

Setup and Application Basics

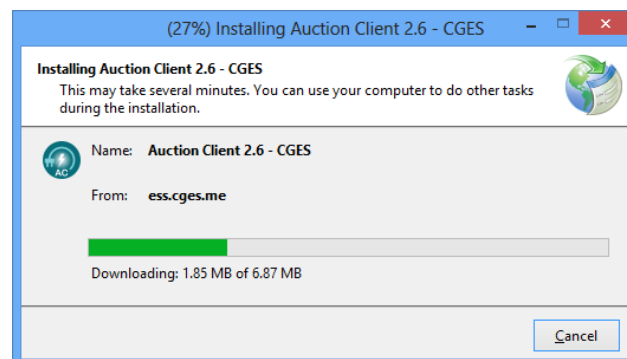
Installing the Program

The Auction System Client is the desktop client and need to be installed from the following web address: <https://ess.cges.me/Auction-Client/>. After the client is installed, it will automatically check for new version upon connecting to the server. If a new version is available, it will offer automatic upgrade. No administrative rights are required.

For installing application click the Install button. A warning window opens:



After confirming the installation, the application is downloaded and installed to the local computer.



Before running application, please ensure, that **.NET 4.0** framework is installed on your computer. If you are using Windows 7 operating system, this package was probably already installed during the Windows installation. .NET 4.0 framework is available also at following location:

<http://www.microsoft.com/en-us/download/details.aspx?id=17851>

Logging in

The user is authenticated by the system with the certificate he or she uses to log in. Since the user may have more than one certificate installed in the certificate store, the proper one has to be selected during the log in process.

The application shows you a message box with containing all the valid certificates or username and password. You have to select the appropriate one.

The image displays two side-by-side 'Login' dialog boxes. The left dialog box is titled 'Login' and contains a 'Certificate' section with a 'Select...' button and a 'View' button. Below this is a 'Server' section with a text field containing 'prod.kostt-nms.com' and a 'Port' dropdown menu set to '9001'. At the bottom are 'Login' and 'Cancel' buttons. The right dialog box is also titled 'Login' and contains an 'Authentication' section with 'Username' and 'Password' text fields. Below this is a 'Server' section with a text field containing 'prod.kostt-nms.com' and a 'Port' dropdown menu set to '9001'. At the bottom are 'Login' and 'Cancel' buttons.

Application Window

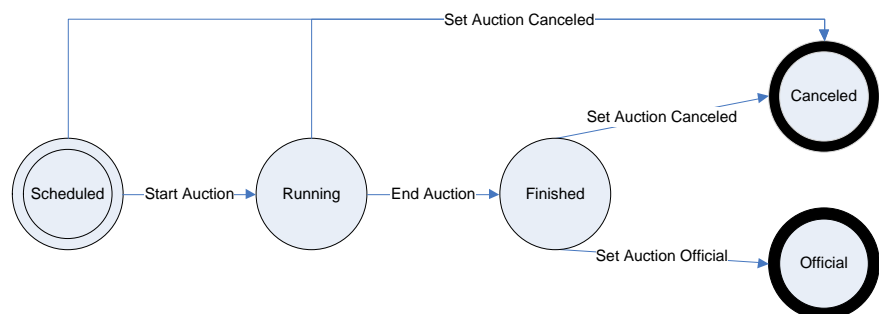
Market Summary, Auctions and Members

The main application window is divided into three parts. First is general review of the market situation. The following tabs are available:

- **Market Summary** with the following columns:
 - **Symbol** – product instance symbol, used when entering the order.
 - **Auction** – auction code.
 - **Delivery** – delivery start date.
 - **Marginal price** – calculated when auction is official.
 - **Offered Qty** – total volume of sell orders.
 - **Tendered Qty** – total volume of buy orders.
 - **Accepted Qty** – volume of successful trades of the auction participant (after the auction is official).
 - **Total Accepted Qty** – total volume of all successful trades.
 - **Trades** – total count of all trades made.

Market Summary Auctions Members									
[All auctions]									
Symbol	Auction	Delivery	Marginal Price	Offered Qty	Tendered Qty	Accepted Qty	Tot. Accepted Qty	Trades	
HS_D_BASE_04	SI-HR-D-20101104	4.11.2010		0	0	0	0	0	0
HS_M_BASE_1110	SI-HR-M-20101101	1.11.2010 - 30.11.2010	0.78	200	451	0	200	14	
SA_D_H01_04	SI-AT-D-20101104	4.11.2010		0	0	0	0	0	0
SA_D_H02_04	SI-AT-D-20101104	4.11.2010		0	0	0	0	0	0
SA_D_H03_04	SI-AT-D-20101104	4.11.2010		0	0	0	0	0	0
SA_D_H04_04	SI-AT-D-20101104	4.11.2010		0	0	0	0	0	0

- **Auctions** with the following columns:
 - **Code** – auction code.
 - **Status** – auction status (Scheduled, Running, Finished, Official or Canceled). Auction statuses diagram is represented on picture below.



- **Scheduled Start** – scheduled start date and time of the auction.
- **Scheduled End** – scheduled end date and time of the auction.

- **Actual Start** – actual start date and time of the auction.
- **Actual End** – actual end date and time of the auction.

Market Summary Auctions Members						
Code	Status	Scheduled Start	Scheduled End	Actual Start	Actual End	
SI-AT-D-20101104	Running	3.11.2010 9:30	3.11.2010 15:30	3.11.2010 9:30		
SI-AT-M-20101101	Official	3.11.2010 9:30	3.11.2010 12:00	3.11.2010 9:30	3.11.2010 10:31	
SI-HR-D-20101104	Running	3.11.2010 9:30	3.11.2010 15:30	3.11.2010 9:30		
SI-HR-M-20101101	Official	3.11.2010 9:30	3.11.2010 12:00	3.11.2010 9:30	3.11.2010 10:31	

Once auction is official, users can export auction results by right clicking on it. User can export **Detailed Results** – each trade is listed separately. This format is more appropriate for further analysis and accounting. By **Cumulative Results** trades are summarized by the receiving organization and border direction. This format is more appropriate for publishing and distributing the results. User can export also **Offered Capacity Document**.

- **Members** with the following columns:
 - **EIC Code, Display Name**
 - **Member Status** – Trading, Halted or Suspended.
 - **Total Financial Guarantee** – member's total financial guarantee of particular trading day.
 - **Available Financial Guarantee** = Total financial guarantee – amount reserved by orders – amount reserved by trades.
 - **Reserved by Orders** – amount reserved by already entered orders.
 - **Reserved by Trades** – amount reserved by trades.

Market Summary Auctions Members						
EIC Code	Display Name	Status	Total Financial Guarantee	Available Financial Guarantee	Reserved by Orders	Reserved by Trades
99XTEST	TEST	Trading	50.000,00	50.000,00	0,00	0,00

Orders and Trades

In the middle detailed data are displayed with special attention to particular auctions and products. The following tabs are available:

- **Orders** with the following columns:
 - **Order Number** – the sequent number of orders.
 - **Member** – the code name of the auction participant.
 - **Transaction** – type of the transaction – Sell or Buy.
 - **Product** – the name of the product the order is for.
 - **Price** – the price offered for the product.

- **Qty** – the asked quantity of the capacity.
- **Spec. Term** – specific terms (All or nothing).

Orders		Trades				
[All auctions]		[All members]		[All transactions]		[All products]
Order Number	Member	Transaction	Product	Price	Qty	Spec. Term
548999	99XTEST-----A	Buy	AS_D_BASE_04	15,00	78	
549001	99XTEST-----A	Buy	AS_D_BASE_04	15,00	30	
549002	99XTEST-----A	Buy	AS_D_BASE_04	41.30	45	
549003	99XTEST-----A	Buy	AS_D_BASE_04	43,50	52	A

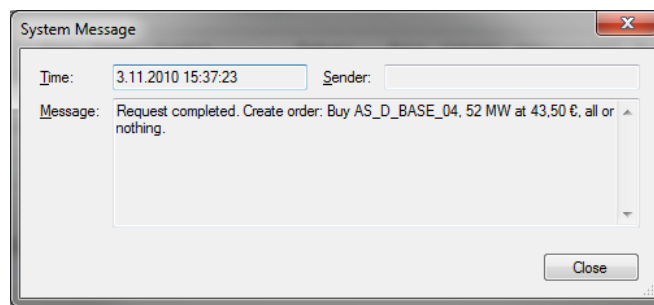
An order may be opened by either double-clicking it or right-clicking it and selecting **Edit** from the context menu. An order may be removed by right-clicking it and selecting **Remove** from the context menu.

- **Trades** with the following columns:
 - **Ticket** – the sequent number of trade.
 - **Status** – V (Valid) and C (Canceled).
 - **Product** – the product that was traded.
 - **Price** – the marginal price for the product.
 - **Qty** – volume of traded capacity.
 - **Trade time** – time of the trade.
 - **Buyer** – name of the company that bought the capacity.
 - **Seller** – name of the company that sold the capacity.

Orders		Trades						
TEST AUCTION		[All products]		[All buyers]		[All sellers]		
Ticket	Status	Product	Price	Qty	Trade Time	Buyer	Seller	
307599	Valid	AS_D_BASE_04	15,00	52	3.11.2010 15:43	99XTEST-----A	10XSI-ELES-----1	
307600	Valid	AS_D_BASE_04	15,00	45	3.11.2010 15:43	99XTEST-----A	10XSI-ELES-----1	
307601	Valid	AS_D_BASE_04	15,00	3	3.11.2010 15:43	99XTEST-----A	10XSI-ELES-----1	

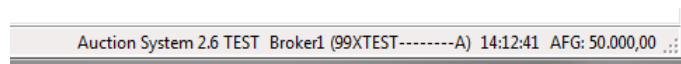
Daily Activities Log

Daily Activities Log is available on the bottom, where users can follow the activities in the system. As user interacts with the data, any messages from the system are added to the messages list. If a system message is long, user can view it more easily by double clicking the message. A new window opens.

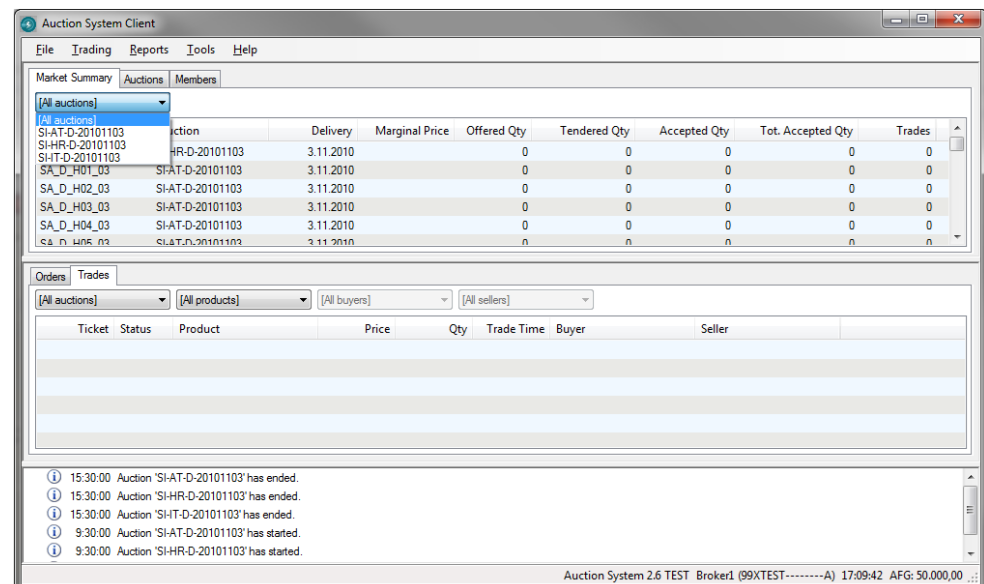


Connection information is shown on the status bar. There are four items:

- The name of the system.
- The username and EIC organization code of the user, currently logged on.
- System time.
- Organizations' Available Financial Guarantee.



On Market Summary list a combo box containing all available auctions at the time is available. If you want to view information concerning just one auction, you can choose the desired auction and information are listed below. The same logic is used on Orders and Trades tabs, and list combo box with all available auctions, all transactions and all products is available.



Application Menus and Functions

File

File | Connect

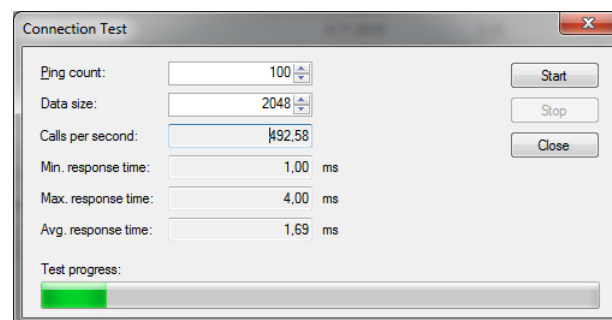
Shows the certificate login message box to allow user to select the certificate, and then initiates the connection to the server. Unavailable if user is already connected.

File | Disconnect

Function disconnects user from the server. Unavailable if user is not connected.

File | Connection Test

Function starts the connection test. User can specify how many test packets of which size to send to the server. A detailed report is produced when the test is complete.



File | Exit

Disconnects from the server (if connected) and exists the application.

Trading

Trading | Buy

This option opens a dialog box with an order to buy. When entering a buy order, in addition to symbol and volume, price also has to be entered. The value in Price field is given in terms of price (€) per MWh. In Price (€)/unit field, the price per unit is automatically calculated.

- **Symbol** – choose the desired product from the given list of products.
- **Power (MW)** – type in the capacity you want to buy.
- **Price (€) / MWh** – type in the price you are willing to pay for 1 MWh.
- **Price (€) /unit** – price per unit is automatically calculated recording to the product and the price per MWh.
- **All or nothing** – all or nothing limited orders are those orders, that are only executed in cases when the entire quantity stated in the order may be allocated at the price specified in the order or at a more favourable price for the auction participant.
- **TOTAL** – At the bottom of the dialog box the system calculates the total amount that has to be paid for the offer is calculated. VAT registration is taken conclusion.

A **new buy order** may be entered in one of the following ways:

- By selecting Buy from Trading menu.
- By pressing Shift+F11.
- By double-clicking the product instance on the Market Summary view.

An **existing order** may be **changed** by opening it and changing its volume or price. You can open an order by either double-clicking it in the Orders view or by right-clicking it and selecting Edit from the context menu. An existing order may be **removed** by right-clicking it and selecting Remove from the context menu.

Trading | Multiple Order Entry

Multiple Order Entry window gives you opportunity to place several orders for products at the same time. Enter desired quantity in a column Volume next to the product that you want. In a column Price enter the price you are willing to pay for 1 MWh. You can also choose All or Nothing option next to every product. You can also filter auctions with list a combo box on the top of the Multiple Order Entry window.

It is able also to enter more series (batches) of orders at the same time for a given auction. Example – for the daily auction on the Slovenian-Italian border, which consists 24 hourly products, may be entered more than one series of orders, for the same product and time, but not more than 10 series for each product.

Symbol	Volume	Price	All or Nothing
SI_D_H01_04	0		<input type="checkbox"/>
SI_D_H02_04	0		<input type="checkbox"/>
SI_D_H03_04	0		<input type="checkbox"/>
SI_D_H04_04	0		<input type="checkbox"/>
SI_D_H05_04	0		<input type="checkbox"/>
SI_D_H06_04	0		<input type="checkbox"/>
SI_D_H07_04	0		<input type="checkbox"/>
SI_D_H08_04	0		<input type="checkbox"/>
SI_D_H09_04	0		<input type="checkbox"/>
SI_D_H10_04	0		<input type="checkbox"/>
SI_D_H11_04	0		<input type="checkbox"/>
SI_D_H12_04	0		<input type="checkbox"/>
SI_D_H13_04	0		<input type="checkbox"/>
SI_D_H14_04	0		<input type="checkbox"/>
SI_D_H15_04	0		<input type="checkbox"/>
SI_D_H16_04	0		<input type="checkbox"/>
SI_D_H17_04	0		<input type="checkbox"/>
SI_D_H18_04	0		<input type="checkbox"/>
SI_D_H19_04	0		<input type="checkbox"/>

It is also appropriate to copy the data from some spreadsheet program (ex. Microsoft Excel). In spreadsheet program you have to create the same rows and columns as they are in Multiple Order Entry window. When data are prepared, copy the table and then press button Paste in Multiple order entry window. See example of prepared data in Microsoft Excel:

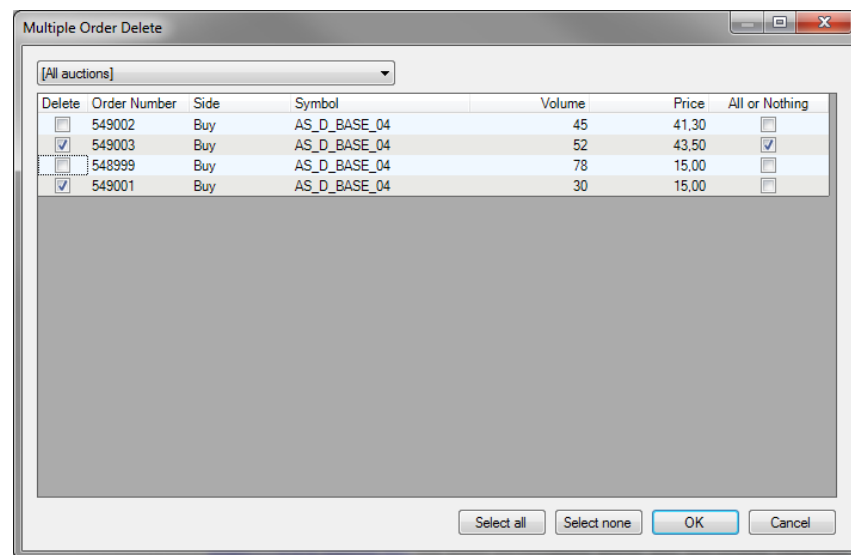
	A	B	C	D
1	SI_D_H01_04	23	1,01 N	
2	SI_D_H02_04	23	1,01 N	
3	SI_D_H03_04	23	1,01 N	
4	SI_D_H04_04	23	1,01 N	
5	SI_D_H05_04	23	1,01 N	
6	SI_D_H06_04	20	1,01 N	
7	SI_D_H07_04	1	1,01 N	
8	SI_D_H08_04	1	1,01 N	
9	SI_D_H09_04	1	1,01 N	
10	SI_D_H10_04	4	1,01 N	
11	SI_D_H11_04	4	1,01 N	
12	SI_D_H12_04	4	1,01 N	

WARNING: Be careful that the names of the available products are exactly the same as in the Multiple Order Entry window and that correct price and the

volume are copied before you click OK. In the last column for All or Nothing you must add value "A" for "All" and add value "N" for Nothing. You can leave cell without any value (default setting is then Nothing), but then you must copy empty column as well.

Trading | Multiple Order Delete

This functionality enables auction participant the cancellation of several orders simultaneity. Auction participant can delete one, two ... or all orders at once, by selecting them at the first column of the Multiple Order Delete window.



Trading | Import Bid Document

Orders can be imported also via XML file and Bid document is used for this purpose. Bid document contains a set of bids (bid orders), which are represented by a time series. The system supports Bid document only as a function of importing orders from the XML file, other Bid document rules are not supported (ex. DocumentIdentification, DocumentVersion ...). See <https://www.entsoe.eu/> for more information about Bid document structure.

Reports

Reports | Orders

Under Orders you can search for a history of your orders. You have to choose the data you are interested in and the product. If you want all products then leave the Product field empty. After you have entered desired fields press Search button. The system will write all the information below.

Report: Orders

Search parameters

From: 3.11.2010 Thru: 3.11.2010

Border: ☐ Include counter direction

Product:

Member: TEST (99XTEST-----A)

User: Broker1 (Broker1), TEST

☒ Buy ☒ Sell

Number	Sequence	Transaction	Symbol	Delivery	Price	Volume	Special term	Action time	Action	Member	User
549002	1	Buy	AS_D_BASE_04	4.11.2010	41.30	45		3.11.2010 15:36	Entered by user	99XTEST-----A	Broker1
549001	2	Buy	AS_D_BASE_04	4.11.2010	15.00	30		3.11.2010 15:43	NoTradeRemove	99XTEST-----A	Broker1
549002	2	Buy	AS_D_BASE_04	4.11.2010	41.30	0		3.11.2010 15:43	Full trade, no quantity remains	99XTEST-----A	Broker1
549003	2	Buy	AS_D_BASE_04	4.11.2010	43.50	0	A	3.11.2010 15:43	Full trade, no quantity remains	99XTEST-----A	Broker1
549003	1	Buy	AS_D_BASE_04	4.11.2010	43.50	52	A	3.11.2010 15:37	Entered by user	99XTEST-----A	Broker1
549001	1	Buy	AS_D_BASE_04	4.11.2010	15.00	30		3.11.2010 15:36	Entered by user	99XTEST-----A	Broker1
548999	2	Buy	AS_D_BASE_04	4.11.2010	15.00	75		3.11.2010 15:43	Partial trade, some quantity r...	99XTEST-----A	Broker1
548999	1	Buy	AS_D_BASE_04	4.11.2010	15.00	78		3.11.2010 15:36	Entered by user	99XTEST-----A	Broker1
548999	3	Buy	AS_D_BASE_04	4.11.2010	15.00	75		3.11.2010 15:43	NoTradeRemove	99XTEST-----A	Broker1

Export Print Close

The contents of the report can be saved to disk in XML format by clicking the Export button. XML format can be also opened with Microsoft Office Excel – right click on saved file and choose Open with... – Microsoft Office Excel. Before opening Excel will ask how you would like to open this file, select option As an XML table and you will get all filtered data in Excel.

Table Tools

Table Name: OrderNumber

Table Style Options

OrderNumber	Sequence	OrganizationEicCode	Username	Symbol	DeliveryFrom	DeliveryTo	BidAsk	Price	Volume	Currency	SpecialTerm	ActionTime	Action
549002	1	99XTEST-----A	Broker1	AS_D_BASE_04	4.11.2010	5.11.2010	Bid	41.3	45	EUR	NoTerm	2010-11-03T15:36:53+01:00	UserInsert
549001	2	99XTEST-----A	Broker1	AS_D_BASE_04	4.11.2010	5.11.2010	Bid	15	30	EUR	NoTerm	2010-11-03T15:43:01+01:00	NoTradeRemove
549002	2	99XTEST-----A	Broker1	AS_D_BASE_04	4.11.2010	5.11.2010	Bid	41.3	0	EUR	NoTerm	2010-11-03T15:43:01+01:00	TradeFullRemove
549003	2	99XTEST-----A	Broker1	AS_D_BASE_04	4.11.2010	5.11.2010	Bid	42.5	0	EUR	AllOrNothing	2010-11-03T15:43:01+01:00	TradeFullRemove
549003	1	99XTEST-----A	Broker1	AS_D_BASE_04	4.11.2010	5.11.2010	Bid	43.5	52	EUR	AllOrNothing	2010-11-03T15:37:23+01:00	UserInsert
549001	1	99XTEST-----A	Broker1	AS_D_BASE_04	4.11.2010	5.11.2010	Bid	15	30	EUR	NoTerm	2010-11-03T15:36:43+01:00	UserInsert
548999	2	99XTEST-----A	Broker1	AS_D_BASE_04	4.11.2010	5.11.2010	Bid	15	75	EUR	NoTerm	2010-11-03T15:43:01+01:00	TradePartRemain
548999	1	99XTEST-----A	Broker1	AS_D_BASE_04	4.11.2010	5.11.2010	Bid	15	78	EUR	NoTerm	2010-11-03T15:36:33+01:00	UserInsert
548999	3	99XTEST-----A	Broker1	AS_D_BASE_04	4.11.2010	5.11.2010	Bid	15	75	EUR	NoTerm	2010-11-03T15:43:01+01:00	NoTradeRemove
549000	2	99XTEST-----A	Broker1	AS_D_BASE_04	4.11.2010	5.11.2010	Bid	52	52	EUR	NoTerm	2010-11-03T15:37:30+01:00	UserDelete
549000	1	99XTEST-----A	Broker1	AS_D_BASE_04	4.11.2010	5.11.2010	Bid	52	52	EUR	NoTerm	2010-11-03T15:36:39+01:00	UserInsert

The report can also be printed. The following action codes are used on a report printout:

- **UI** – order created by broker,
- **UU** – order changed by broker,
- **UD** – order removed by broker,
- **AD** – order removed by administrator,
- **TPR** – a trade was made, but a part of order volume still remains,
- **TFR** – a trade was made and order removed since no volume remains,
- **IDD** – order deleted by startup procedure.

Report

File

Orders Report
3.11.2010 15:46:22

From / thru: 3.11.2010 - 3.11.2010
 Border:
 Product:
 Member: 99XTEST-----A
 User: Broker1
 Transaction: Buy Sell

Order	Member	User	Symbol	Delivery	Transaction	Price	Volume	Action time	Action
549002/1	99XTEST-----A	Broker1	AS_D_BASE_04	4.11.2010	Buy	41,30	45	3.11.2010 15:36:53	UI
549001/2	99XTEST-----A	Broker1	AS_D_BASE_04	4.11.2010	Buy	15,00	30	3.11.2010 15:43:01	NTR
549002/2	99XTEST-----A	Broker1	AS_D_BASE_04	4.11.2010	Buy	41,30	0	3.11.2010 15:43:01	TFR
549003/2	99XTEST-----A	Broker1	AS_D_BASE_04	4.11.2010	Buy	43,50	0 (A)	3.11.2010 15:43:01	TFR
549003/1	99XTEST-----A	Broker1	AS_D_BASE_04	4.11.2010	Buy	43,50	52 (A)	3.11.2010 15:37:23	UI
549001/1	99XTEST-----A	Broker1	AS_D_BASE_04	4.11.2010	Buy	15,00	30	3.11.2010 15:38:43	UI
548999/2	99XTEST-----A	Broker1	AS_D_BASE_04	4.11.2010	Buy	15,00	75	3.11.2010 15:43:01	TFR
548999/1	99XTEST-----A	Broker1	AS_D_BASE_04	4.11.2010	Buy	15,00	78	3.11.2010 15:38:33	UI
548999/3	99XTEST-----A	Broker1	AS_D_BASE_04	4.11.2010	Buy	15,00	75	3.11.2010 15:43:01	NTR
549000/2	99XTEST-----A	Broker1	AS_D_BASE_04	4.11.2010	Buy	52,00	52	3.11.2010 15:37:30	UD
549000/1	99XTEST-----A	Broker1	AS_D_BASE_04	4.11.2010	Buy	52,00	52	3.11.2010 15:38:38	UI

Reports | Trades

The same logic as described by Orders is also used for Trades and users can search, view, export or print trades history.

Report: Trades

Search parameters

From: 3.11.2010 Thru: 3.11.2010 Search

Border: ☐ Include counter direction

Product:

Member: TEST (99XTEST-----A)

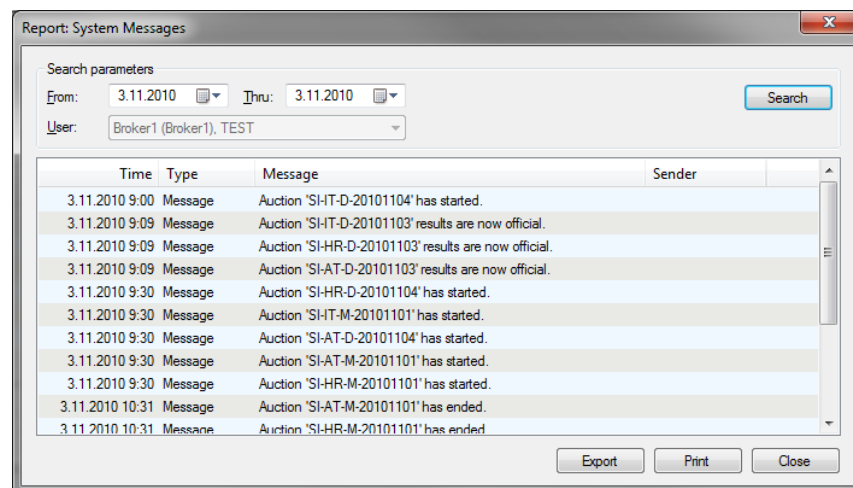
User: Broker1 (Broker1), TEST

Ticket	Time	Status	Symbol	Delivery	Price	Volume	Value w/o VAT	Buyer	Seller
307599	3.11.2010 15:43	Valid	AS_D_BASE_04	4.11.2010	15,00	52	18.720,00	99XTEST-----A	10XSI-ELES-----1
307600	3.11.2010 15:43	Valid	AS_D_BASE_04	4.11.2010	15,00	45	16.200,00	99XTEST-----A	10XSI-ELES-----1
307601	3.11.2010 15:43	Valid	AS_D_BASE_04	4.11.2010	15,00	3	1.080,00	99XTEST-----A	10XSI-ELES-----1

Export Print Close

Reports | System Messages

A history of system messages can be searched with selecting System Messages under the Reports menu. All the messages from the system (no matter for which client application they are intended) are listed.



The contents of the report can also be exported and printed.

Reports | Allocation Result Documents

In this menu ECAN documents with auctions results are available. Once auction is official, system can send emails to participants with **Allocation Result Document** (XML) attached. Mail addresses indicated at registration are used. Allocation Result Document content:

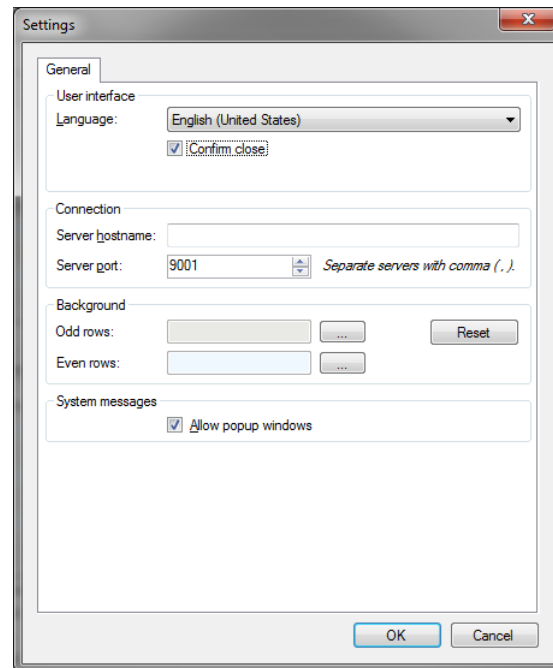
- **Detailed results** of the auction, according to ECAN 4.0 Allocation Results Document. Document includes detailed information for any given offer (the quantity offered and the price) and details of the successful/unsuccessful bids (allocated quantity and price). Tag **ContractIdentification** contains Capacity Agreement Identification (CAI) is specified.

You can see more about Allocation Results Document on <http://www.entsoe.eu/>.

Tools

Tools | Options

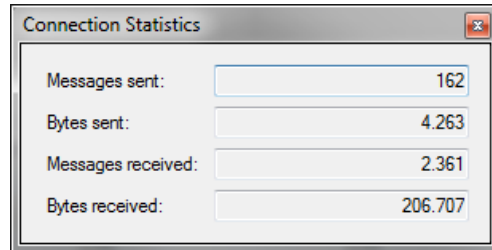
Opens a dialog for setting application options:



- **User interface**
 - **Language** – the language and formatting of the application. If you change this setting, you have to restart the application for it to take effect.
 - **Confirm close** – if checked, the program asks for confirmation when you try to close main window or exit the application.
- **Connection**
 - **Server hostname** – DNS name or IP address of the server.
 - **Server port** – TCP port of the server. Auction System port is 9001 and if you are using firewall, you should add outbound rule for it.
- **Background**
 - **Odd rows** – the background color of odd rows.
 - **Even rows** – the background color of even rows.
 - **Reset button** – resets the background colors to default values.
- **System messages**
 - **Allow popup windows** – Some important messages can be displayed also in popup windows. With this settings user allows popup windows.

Tools | Connection Statistics

Shows a window with some detailed information about client connections.



Help

Help | About

Shows a window containing the exact version of the application you are using and developer information.

